

Pulley block

Painted



Description

The pulley blocks from Gebuwin's product range are suitable for both hand and electric winches. The wheel is manufactured from cast iron and fitted with bearings. The pulley blocks are used to guide the cable to the location where the load has to be moved. A fine way to make moving your load easier.

Product specifications

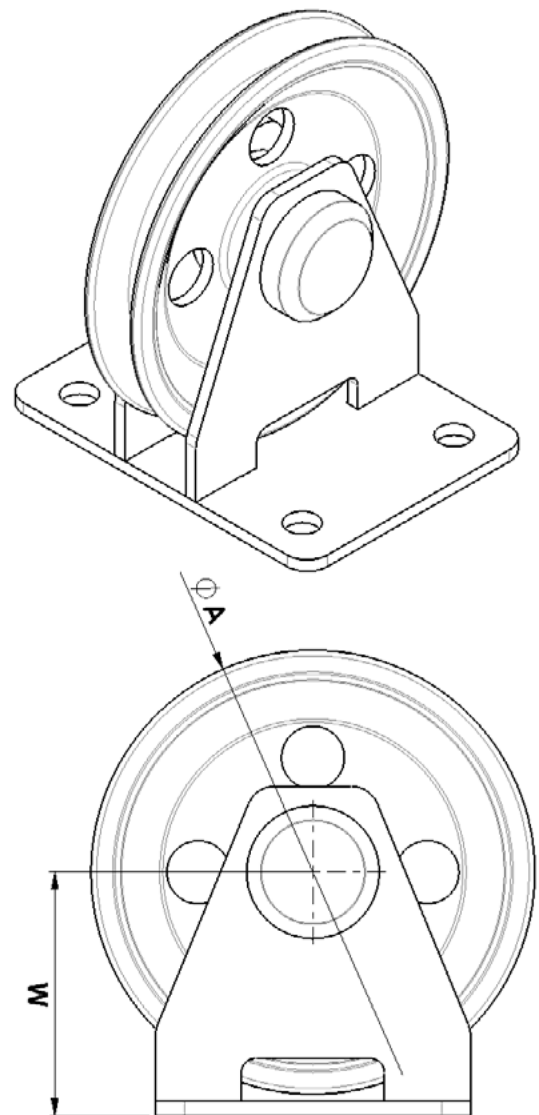
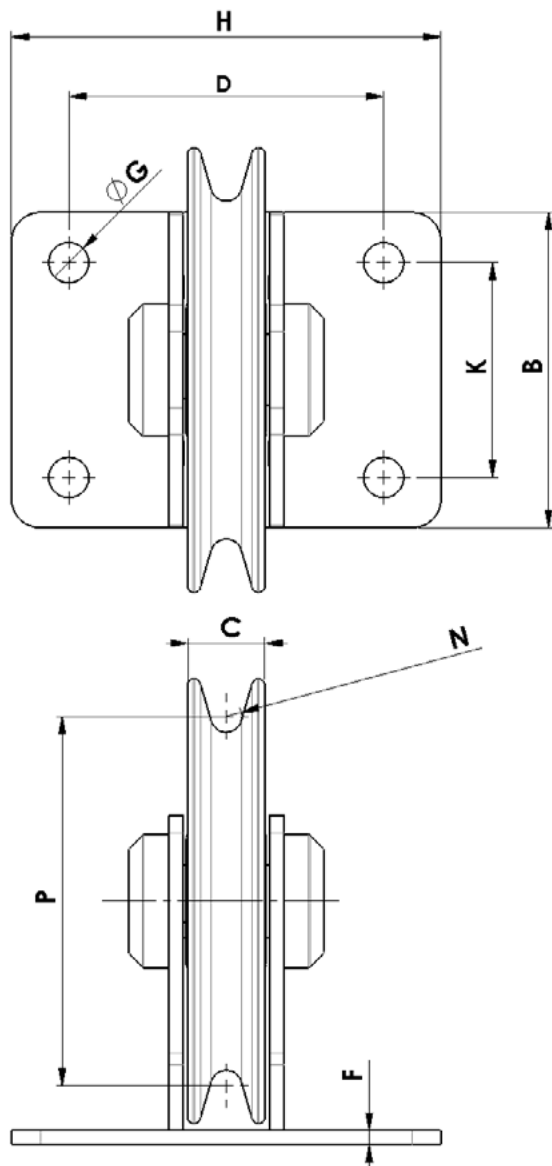
- > suitable for electric and manual winches
- > pulley wheel made of cast iron
- > bracket made of steel with one layer of paint
- > plain bearing



Options (code)

- ATEX suitable

Technical specifications KB150–7500



Dimensions (mm)	A	B	C	D	E	G	H	K	M	N	P
<u>KB150</u>	90	60	18	65	5	11	90	35	54	4,5	72
<u>KB300</u>	100	65	20	70	5	11	100	35	59	5	80
<u>KB600</u>	120	65	28	75	5	13	105	35	69	5,5	98
<u>KB1500</u>	155	110	27	80	6	14	120	75	85	5,5	129
<u>KB2000</u>	220	165	32	105	8	17	155	115	121	8,5	184
<u>KB4000</u>	260	200	40	140	10	21	195	145	143	9,5	222
<u>KB7500</u>	310	240	52	155	12	21	215	180	170	14	250

Technical specifications	Unit	<u>KB150</u>	<u>KB300</u>	<u>KB600</u>	<u>KB1500</u>	<u>KB2000</u>	<u>KB4000</u>	<u>KB7500</u>
Max. capacity	kg	150	300	600	1500	2000	4000	7500
Max. rope diameter-Ø	mm	8	9	10	10	16	18	26
Weight	kg	1	1	1,5	3	6,5	11,5	21
Article number	no.	77001760	77001750	77001700	77001710	77001720	77001730	77001740