

INKO21

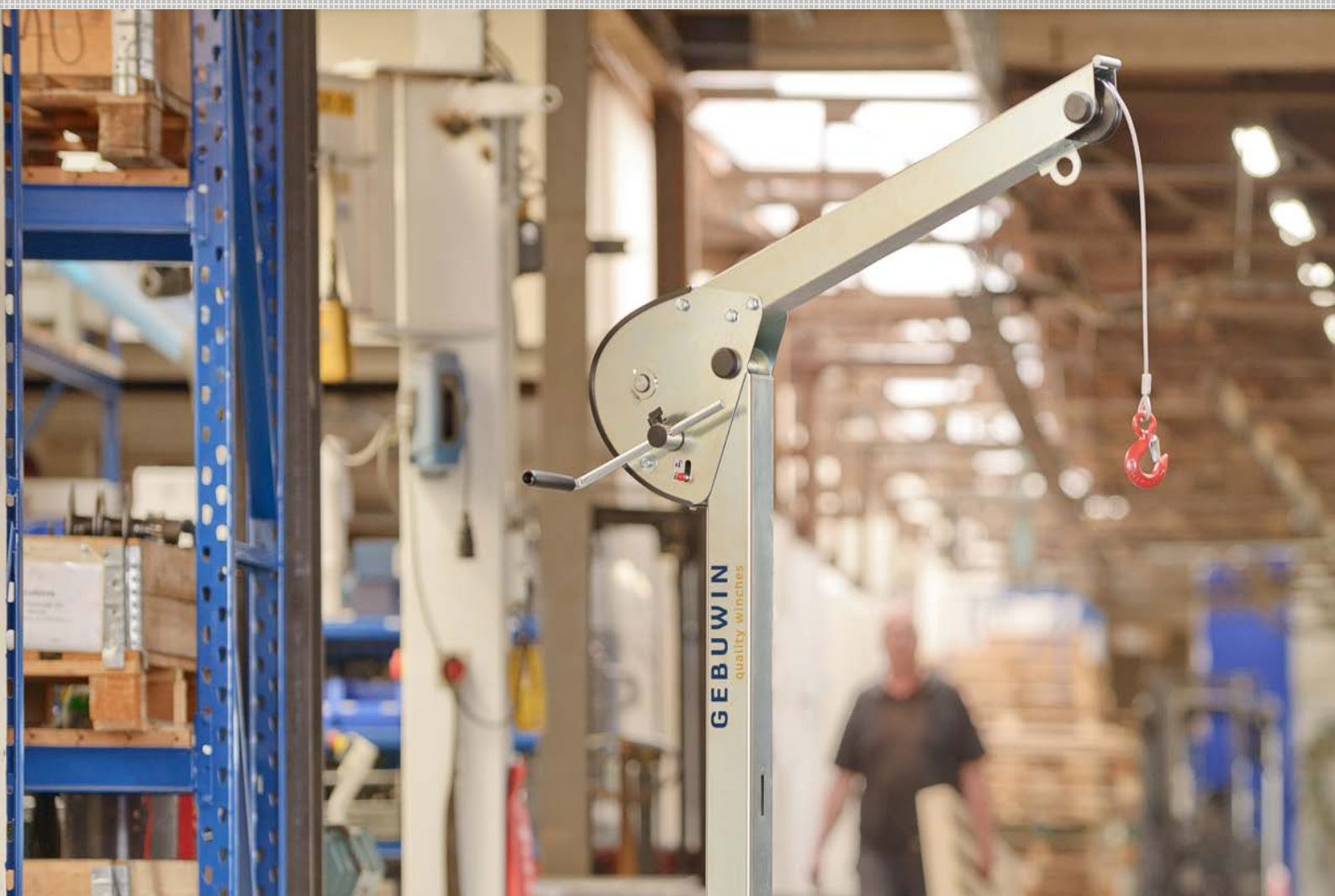
+34 972 66 48 36

info@inko21.com

**inko21.com**

# Swivel davit cranes

*Gebuwin has developed a modern designed swivel davit crane especially for lifting goods on location. This davit crane helps you to carry out your work efficiently without the risk of physical strain. The lifting davit is lightweight and is therefore ready for use within a few seconds thanks to the folding system of the boom. When the davit is placed in the accompanying floor socket, it can rotate 360 degrees. Gebuwin produces three types of lifting davits, which vary in lifting capacity and length of the boom. Because of the integrated winch and cable, the davit is not only compact but also low-maintenance. The crank is also adjustable in length so that the hoisting speed can be adjusted.*



## Index

- Swivel davit cranes p. 49
- Swivel davit cranes SST p. 51
- Swivel davit crane 501
- Swivel davit 2 meter reach p. 49

# Swivel davit crane

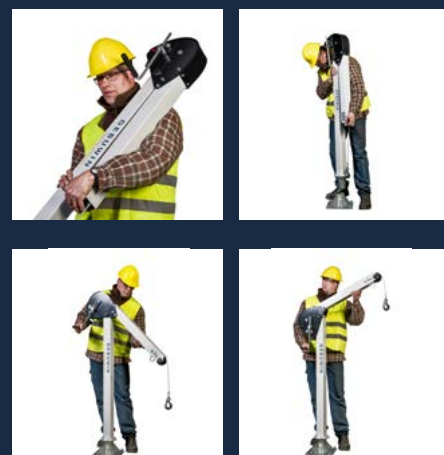
125 – 500 kg

## Description of the winch

The Swivel Davit is a very user-friendly standing crane. Lightweight and portable. Within 3 seconds this davit is ready for use. The integrated winch and cable provide an ergonomic and modern look.

## Product specifications

- robust and safe lifting davit crane in compliance with EN13157
- ready to use in 5 seconds
- integrated winch and cable in a modern design
- easy to transport
- load pressure brake with double ratchet system for safe stable hold of the load in any position
- possible to rotate 360° due to the use of ball bearings
- adjustable crank
- including 13 meter wire rope (d5 mm) with hook
- 1 layer of paint

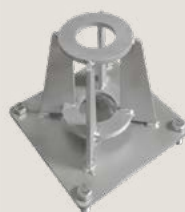


## Options (code)

- zinc-plated finish 6 - 8 micron (EV)
- made out of stainless steel 316 ([p. 49](#))
- ATEX certified zone 2 and 22 (EX)
  - CE II 3G Ex IIC T4 Gc, -20°C<T amb <+70°C
  - CE II 3D Ex IIIC T135°C Dc, -20°C<T amb <+70°C
- custom options possible - [on request](#)

## Accessories

- floor, wall and in-concrete sockets
- carry bag and protection cover



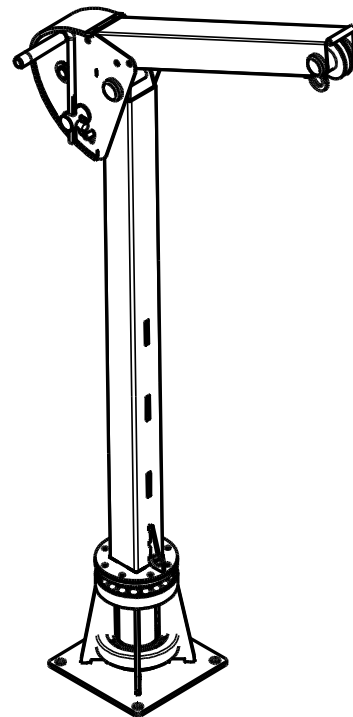
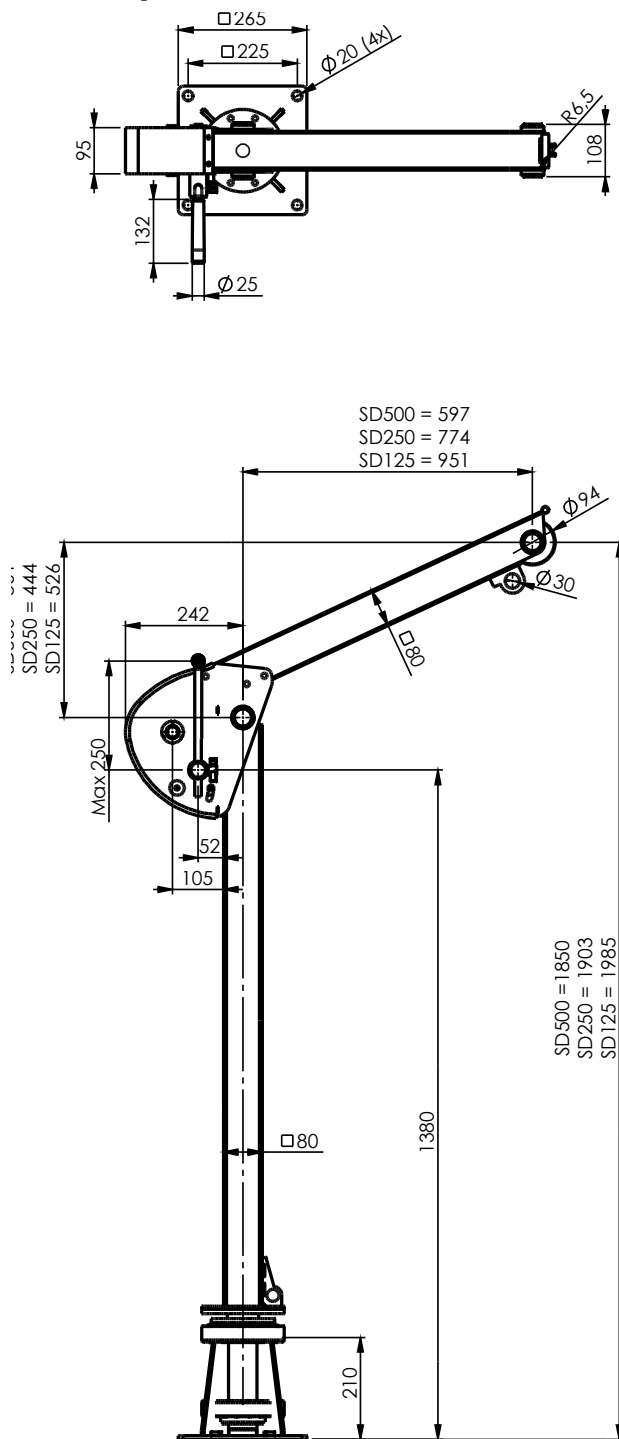
CE   [Product & instruction video on YouTube](#)

**GEBUWIN**  
quality winches

Industrieweg 6, 7102 DZ Winterswijk, The Netherlands  
Telephone: +31(0)543 532600 Email: [info@gebuwin.com](mailto:info@gebuwin.com)

For more information, visit: [www.gebuwin.com](http://www.gebuwin.com)

## Technical specifications SD125-500



Technical specifications	Unit	SD125	SD250	SD500
Reach	cm	951	774	597
Capacity 1st layer	kg	125	250	500
Capacity top layer	kg	125	250	500
Max. rope storage top layer*	m	18	18	13
Lifting speed	m/min	1,2	1,2	1,2
Crank effort at full load	kg	6	8	10
Weight Swivel Davit	kg	30	30	30
Weight floor-socket	kg	8,9	8,9	8,9
Article number	no.	77001890	77001870	77001850

\*standard delivered with 13m cable

# Swivel davit crane SST

125 – 500 kg

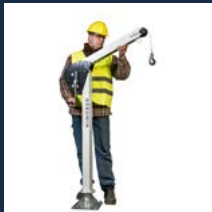


## Description of the winch

The lifting davit stainless steel 316 is a very user-friendly standing crane. Lightweight and portable. Within 3 seconds this winch is ready for use. Due to the use of 316 stainless steel, the Davit crane has a very high corrosion resistance.

## Product specifications

- robust and safe lifting davit crane in compliance with EN13157
- ready to use in 5 seconds
- integrated winch and cable in an ergonomic modern design
- easy to transport
- load pressure brake with double ratchet system for safe stable hold of the load in any position
- possible to rotate 360° due to the use of ball bearings
- adjustable crank
- including 13 meter stainless steel wire rope (d5 mm) with hook
- full stainless steel grade 316 body

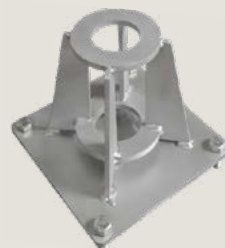


## Options (code)

- ATEX certified zone 2 and 22 (EX)
  - CE II 3G Ex IIC T4 Gc, -20°C<T amb <+70°C
  - CE II 3D Ex IIIC T135°C Dc, -20°C<T amb <+70°C
- custom options possible - [on request](#)

## Accessoires

- floor, wall and in-concrete sockets
- carry bag and protection cover



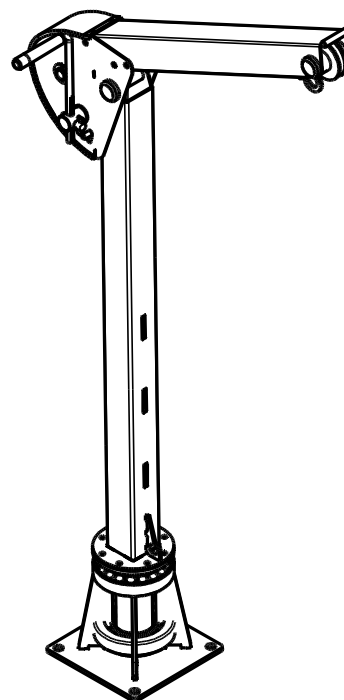
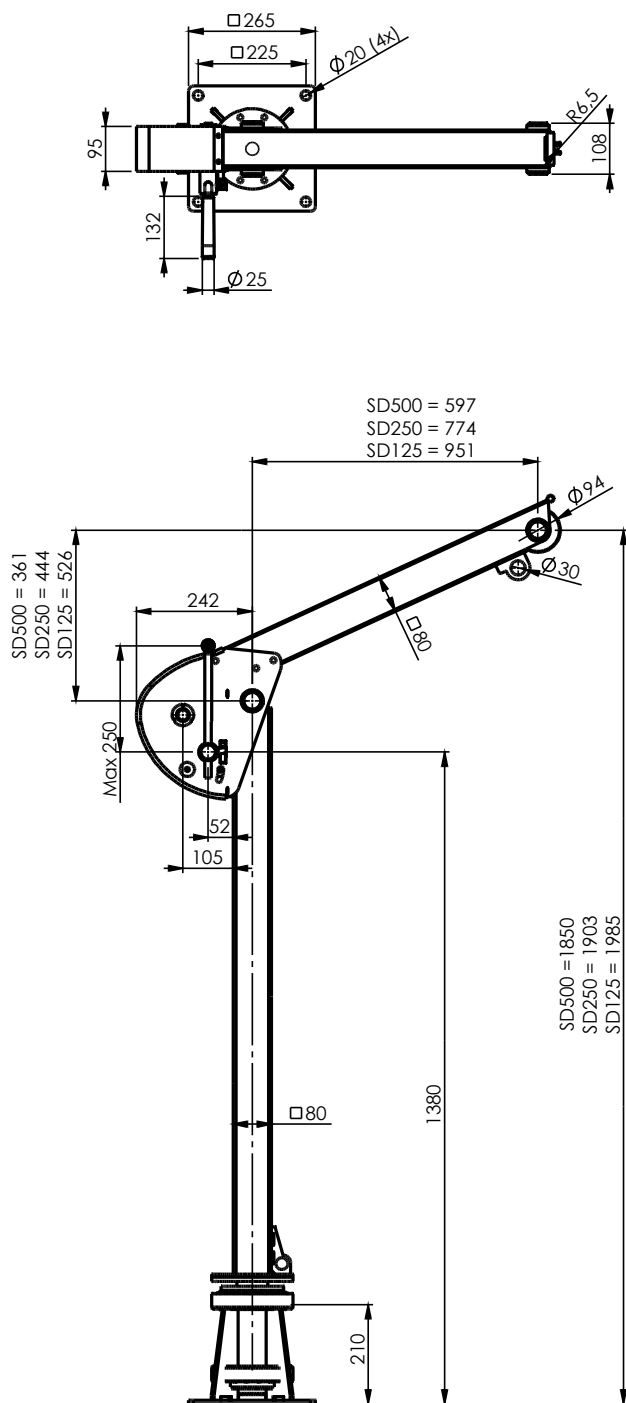
[Product & instruction video on YouTube](#)

**GEBUWIN**  
quality winches

Industrieweg 6, 7102 DZ Winterswijk, The Netherlands  
Telephone: +31(0)543 532600 Email: [info@gebuwin.com](mailto:info@gebuwin.com)

For more information, visit: [www.gebuwin.com](http://www.gebuwin.com)

## Technical specifications SD125-500



Technical specifications	Unit	SD125	SD250	SD500
Reach	cm	951	774	597
Capacity 1st layer	kg	125	250	500
Capacity top layer	kg	125	250	500
Max. rope storage top layer*	m	18	18	13
Lifting speed	m/min	1,2	1,2	1,2
Crank effort at full load	kg	6	8	10
Weight Swivel Davit	kg	30	30	30
Weight floor-socket	kg	8,9	8,9	8,9
Article number	no.	77001940	77001930	77001920
*standard delivered with 13m cable				

# Swivel Davit Crane

## 300 – 500 kg

### Description of the winch

This davit crane is specifically designed to meet the needs of water treatment plants. Unlike other models with integrated winches, the winch is situated on top of the davit. This placement allows for a cable to be securely attached to a pump. Additionally, this davit is compatible with the Pulley Man, which means that lifting heavy loads of up to 300 kg requires no manual effort, making operations significantly easier and more efficient.

### Product specifications

- robust and safe lifting davit crane in compliance with EN13157
- ready to use in 5 seconds
- easy to transport
- Suitable to use with a manual winch or Pulley Man
- possible to rotate 360° due to the use of ball bearings
- zinc plated finish

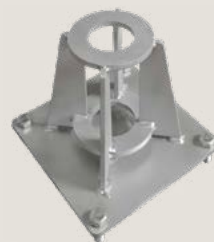


### Options (code)

- ATEX certified zone 2 and 22 (EX)
  - CE II 3G Ex IIC T4 Gc, -20°C<T amb <+70°C
  - CE II 3D Ex IIIC T135°C Dc, -20°C<T amb <+70°C
- custom options possible - [on request](#)

### Accessoires

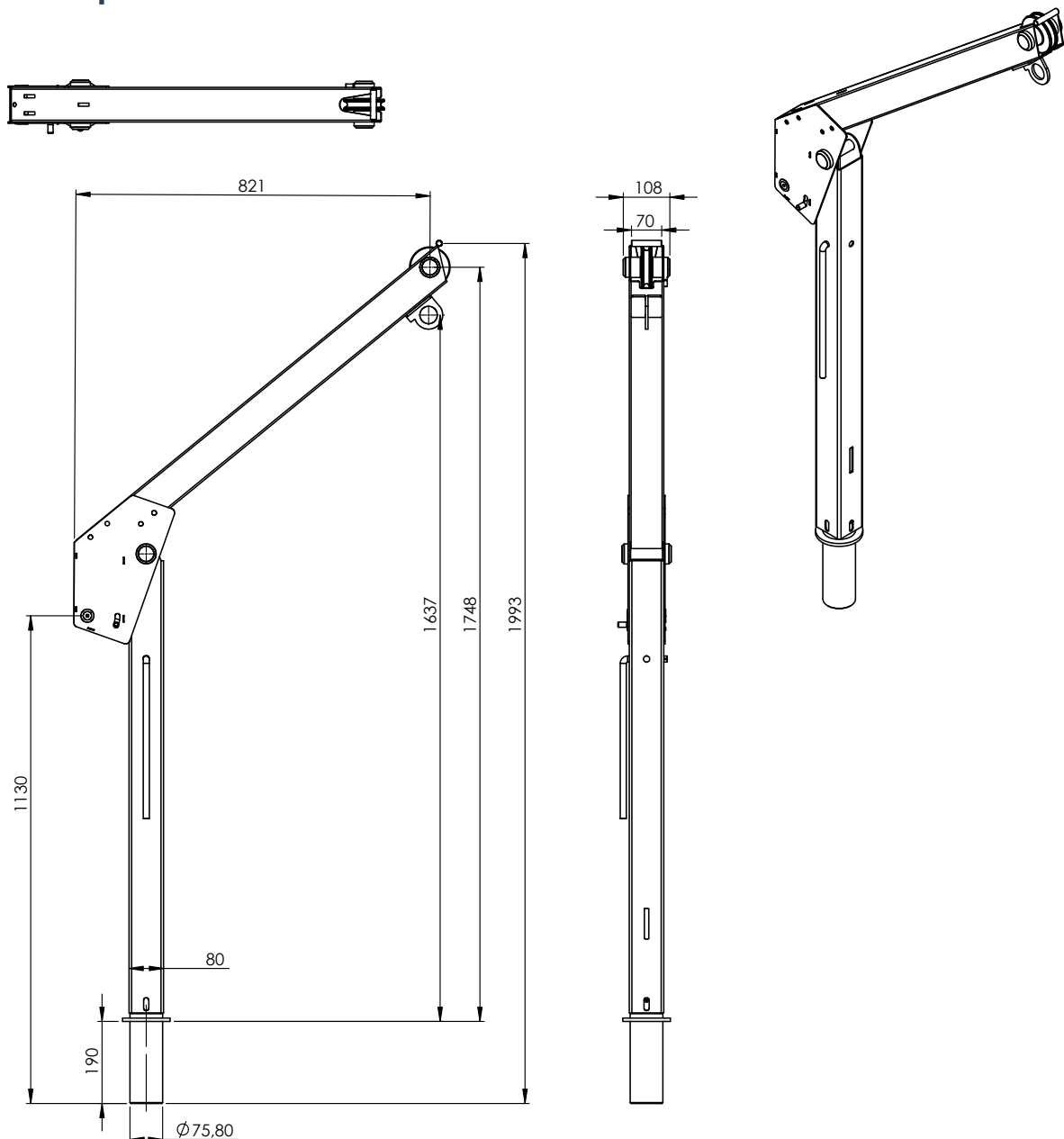
- floor, wall and in-concrete sockets
- carry bag and protection cover



CE Ex  [Product & instruction video on YouTube](#)



## Technical specifications SD501



Technical specifications	Unit	SD501
Reach	cm	821
Capacity 1st layer - winch	kg	500
Capacity top layer - winch	kg	500
Capacity 1st layer - PM300	kg	300
Capacity top layer - PM300	kg	300
Max. rope storage top layer - winch	m	13
Max. rope storage top layer - PM300	m	120
Lifting speed - winch	m/min	1,2
Lifting speed - PM300	m/min	4
Crank effort at full load - winch	kg	10
Weight Swivel Davit	kg	24
Weight Swivel Davit incl. PM300	kg	29
Weight Swivel Davit incl. winch	kg	35
Weight floor-socket	kg	8,9
Article number - SD501 + winch	no.	77001910
Article number - SD501 + PM300	no.	77001916



# Davit Crane SD900

## 900 – 600 kg

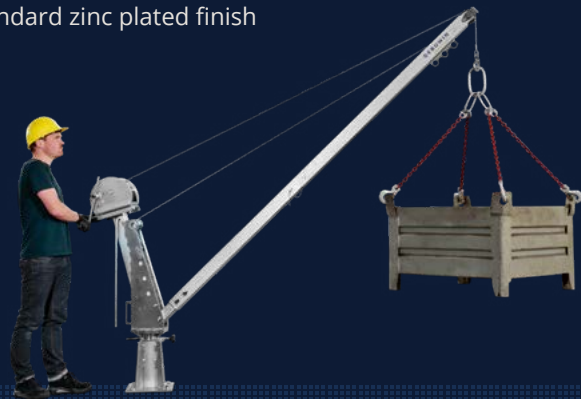
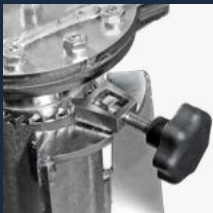
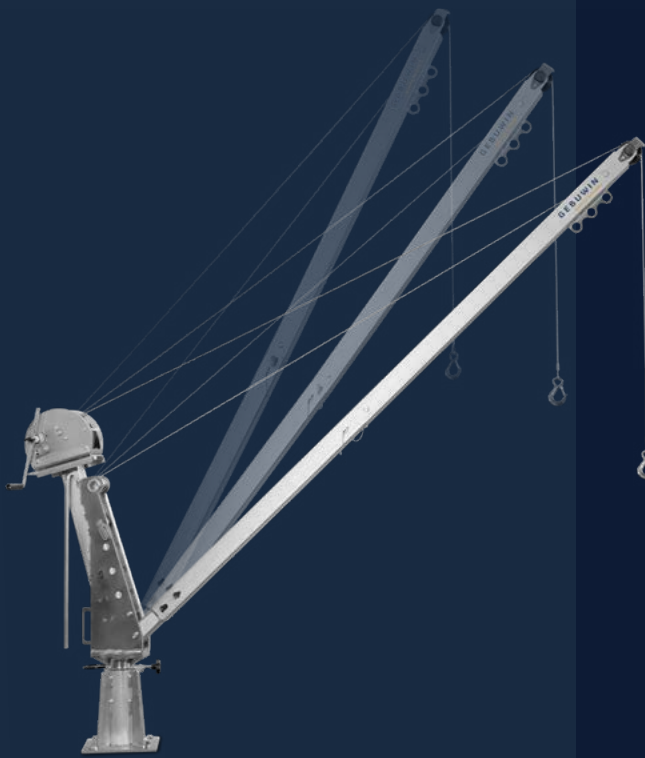
### Description

Discover the versatility of our davit crane! With three adjustable positions, this crane effortlessly adapts to your lifting needs. Depending on the position, the lifting capacity varies; up to 900 kg at 1 meter, 800 kg at 1,5 meters and 600 kg at 2 meters.

Thanks to the 360 degree rotation function, you can easily reach the desired position. When in position you can lock the swivel motion for controlled lifting and lowering. The standard galvanized finish ensures durability, while you can attach various winches or even a chain hoist to the davit. Ideal for any project where strength and flexibility come together!

### Product specifications

- > adjustable reach: 1 meter, 1,5 meters and 2 meters
- > robust and safe lifting davit crane in compliance with EN13157
- > possible to lock swivel motion
- > davit crane consists of 4 parts - fast installation
- > possible to rotate 360° with arm, or belt on end of boom
- > possible to mount different winches on crane: CW700 & TL1500
- > Standard zinc plated finish



### Options

- 40 cm height extension
- available in stainless steel 316
- ATEX certified zone 2 and 22 (EX)
  - CE II 3G Ex IIC T4 Gc, -20°C<T amb <+70°C
  - CE II 3D Ex IIIC T135°C Dc, -20°C<T amb <+70°C
- custom options possible - [on request](#)

### Accessories

- floor & wall sockets
- 3 carry bags
- webbing belt to swivel davit for heavy loads

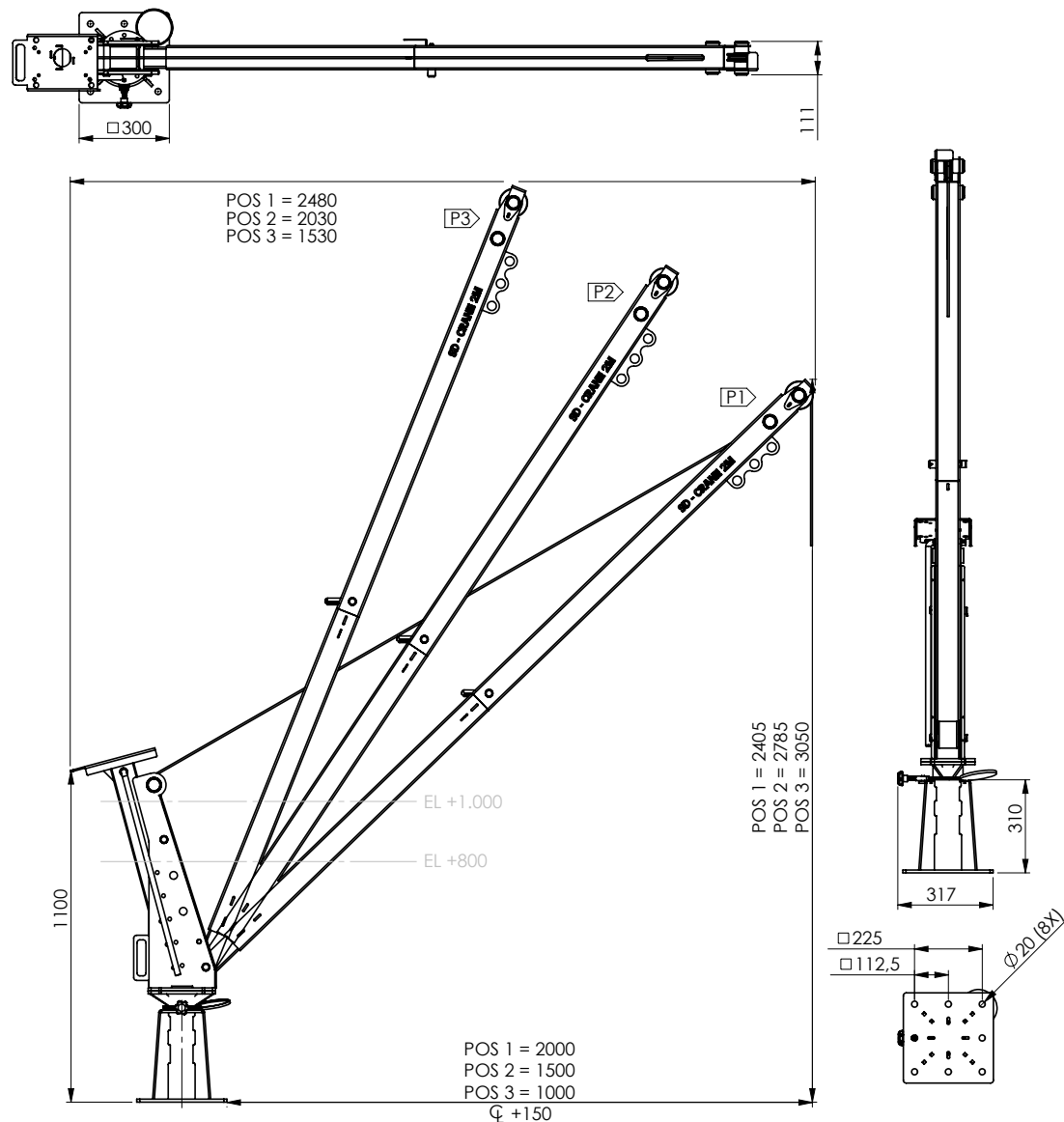
CE Ex  [Product & instruction video on YouTube](#)

**GEBUWIN**  
quality winches

Industrieweg 6, 7102 DZ Winterswijk, The Netherlands  
Telephone: +31(0)543 532600 Email: [info@gebuwin.com](mailto:info@gebuwin.com)

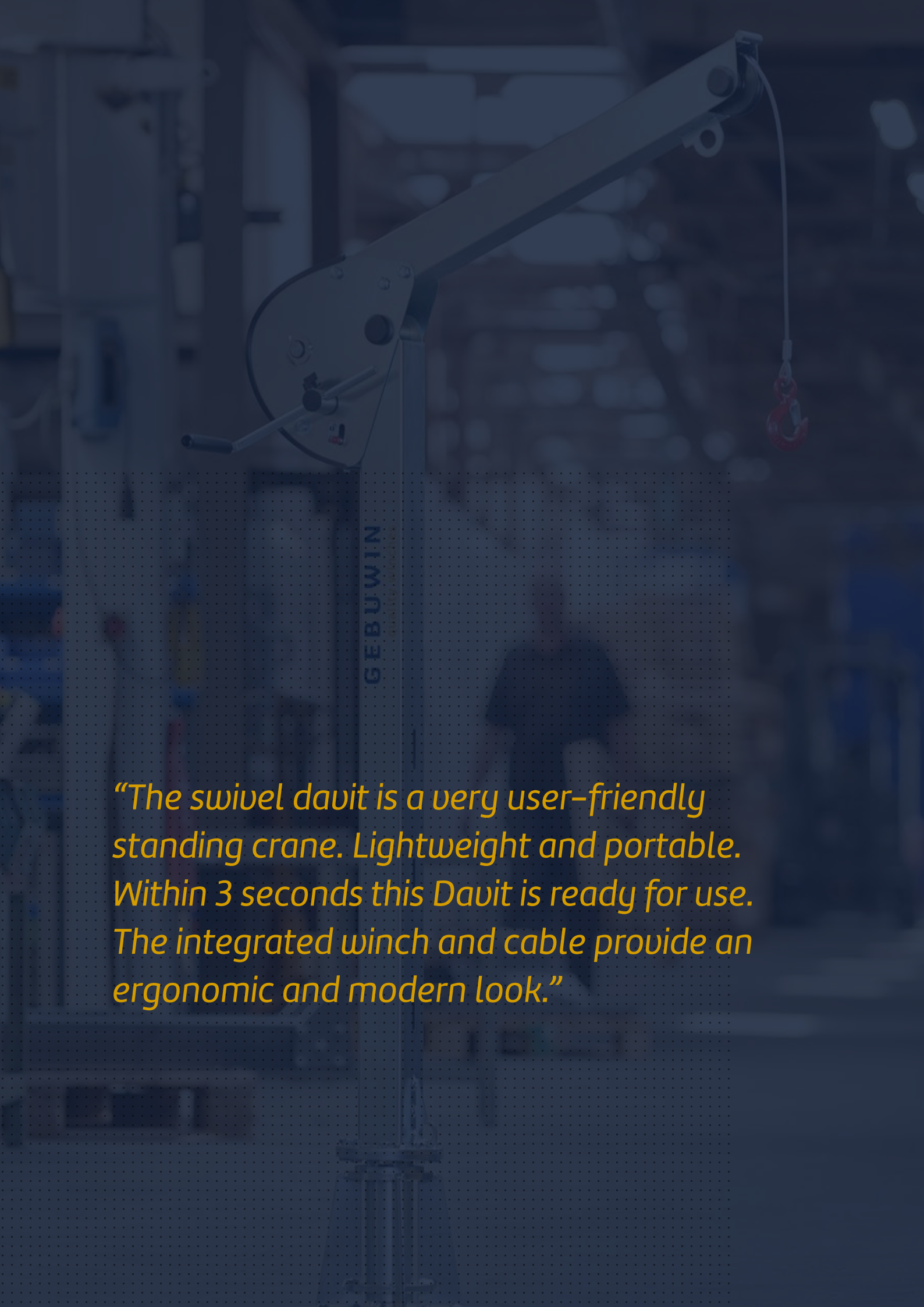
For more information, visit: [www.gebuwin.com](http://www.gebuwin.com)

## Technical specifications SD900



Technical specifications	Unit	SD900 EV incl. TL1500	SD900 EV incl. CW700
<b>Max capacity reach 1 meter (1st layer)</b>	<b>kg</b>	<b>900</b>	<b>700</b>
Capacity 4th layer	kg	900	475
Capacity last layer	kg	900	290
<b>Max capacity reach 1,5 meter (1st layer)</b>	<b>kg</b>	<b>800</b>	<b>700</b>
Capacity 4th layer	kg	800	475
Capacity last layer	kg	800	290
<b>Max capacity reach 2 meters (1st layer)</b>	<b>kg</b>	<b>600</b>	<b>600</b>
Capacity 4th layer	kg	600	475
Capacity last layer	kg	600	290
Rope storage 1st layer	m	3,5	2
Rope storage 4th layer	m	20	11
Rope storage top layer	m	33	40
Rope diameter-Ø	mm	8	6
MBL of cable	kN	41	23
Lifting speed	m/min	1,2	2,2
Weight (excl. winch)*	kg	49	
Weight winch	kg	27	14
Article number (excl. winch)	nr.	77002002	77002001

\*each part weighs <23kg

A swivel davit crane is shown in a warehouse setting. The crane has a vertical column with the brand name 'GEBUWIN' printed on it. A horizontal arm extends from the top of the column, and a cable with a red hook is attached to the end of the arm. A person is standing in the background, providing a sense of scale. The background is slightly blurred, showing various items on shelves in the warehouse.

*“The swivel davit is a very user-friendly standing crane. Lightweight and portable. Within 3 seconds this Davit is ready for use. The integrated winch and cable provide an ergonomic and modern look.”*